



# GMT MONTHLY MEMBERSHIP PROGRESS REPORT

Results as of: 4/30/2018

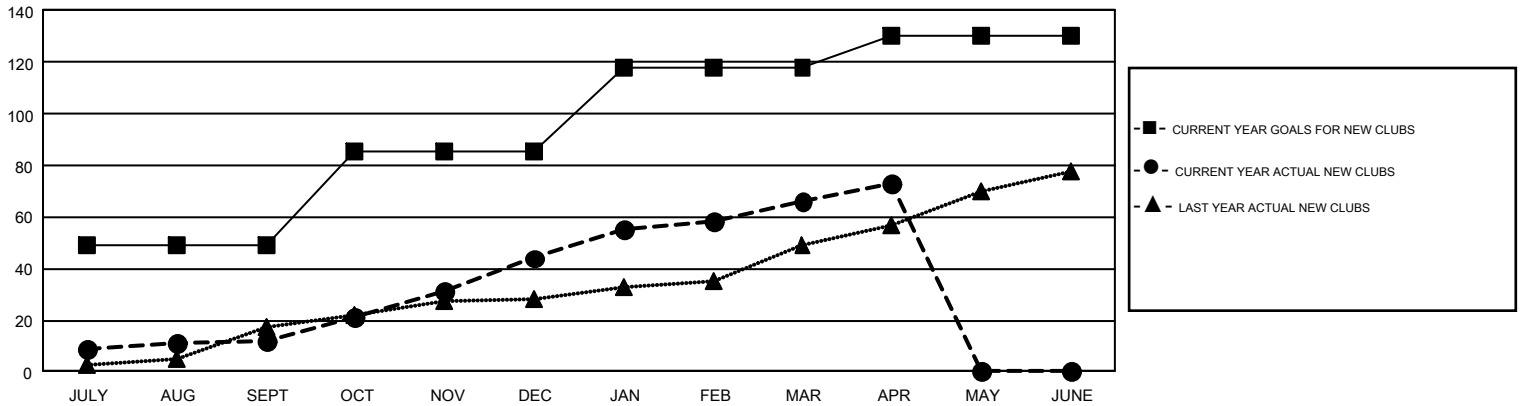
## GMT Constitutional Area 6, Group E

GMT: VASUDEV VALAWALKAR

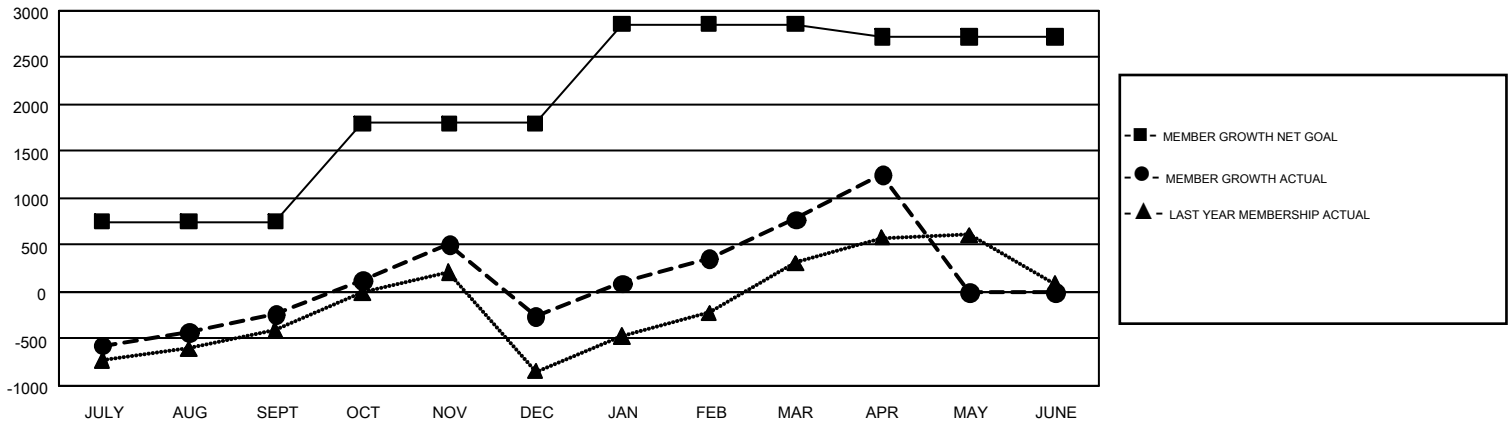
REPORT DOES NOT INCLUDE CLUBS IN UNDISTRICTED AREAS.

Clubs				Members			
RESULTS FOR 2017-2018				RESULTS FOR 2017-2018			
QUARTER	NEW CLUB GOAL	NEW CLUBS	DROPPED CLUBS	QUARTER	MEMBER GROWTH NET GOAL	MEMBER GROWTH ACTUAL	DROPPED MEMBERS ACTUAL (including transfers)
JULY/AUG/SEPT	49	12	2	JULY/AUG/SEPT	750	1,346	1,443
OCT/NOV/DEC	36	32	32	OCT/NOV/DEC	1,050	1,577	1,545
JAN/FEB/MAR	33	22	6	JAN/FEB/MAR	1,060	1,842	516
APR/MAY/JUNE	12	7	1	APR/MAY/JUNE	-140	629	82

GOALS AND ACTUAL NEW CLUBS CUMULATIVE



GOALS AND ACTUAL MEMBERS CUMULATIVE



DROPPED CLUBS: 41	705 CLUBS OF 1,081 ADDED 1 OR MORE NEW MEMBERS	<u>GENDER DISTRIBUTION</u>	
<u>DROPPED MEMBERS</u>		MALE	25,653 (78.34%)
DECEASED	115	FEMALE	7,092 (21.66%)
CLUB CANCELLED	911	TOTAL FAMILY UNIT MEMBERS	
OTHER	2,560	9,660	
TOTAL	3,586	FAMILY MEMBERS PAYING HALF DUES	
	<a href="#">CLICK HERE FOR CUMULATIVE MEMBERSHIP DATA</a>	5,133	